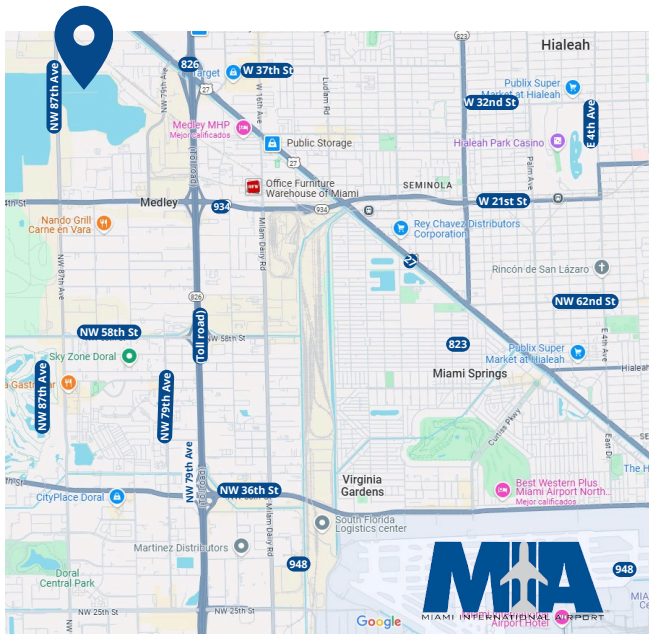




## INDUSTRIAL SPACE FOR SALE OR LEASE



### PROPERTY FEATURES

- 28,544 SF Total SF Available
- 4,000 SF Office (2 Floors)
- 4 Docks + 1 Ramp
- 24' Clear Ceiling Height
- 3 Phase Power / 480 Volts
- LED lightning & Fire-Sprinklers
- Racks already in place
- Okeechobee Road Signage
- Plenty of Parking

### SALE / LEASE

**10MIL (350PSF) / 18 PSF GROSS**

**For more information contact:**

**Elias G. Patsalos, CCIM**  
**Phone:** 305-804-9154  
**Email:** elias@agorare.com

**Michal Bibr**  
**Phone:** 305-458-4140  
**Email:** michal@agorare.com



Scan the QR code for more information

**Agora Real Estate Group**

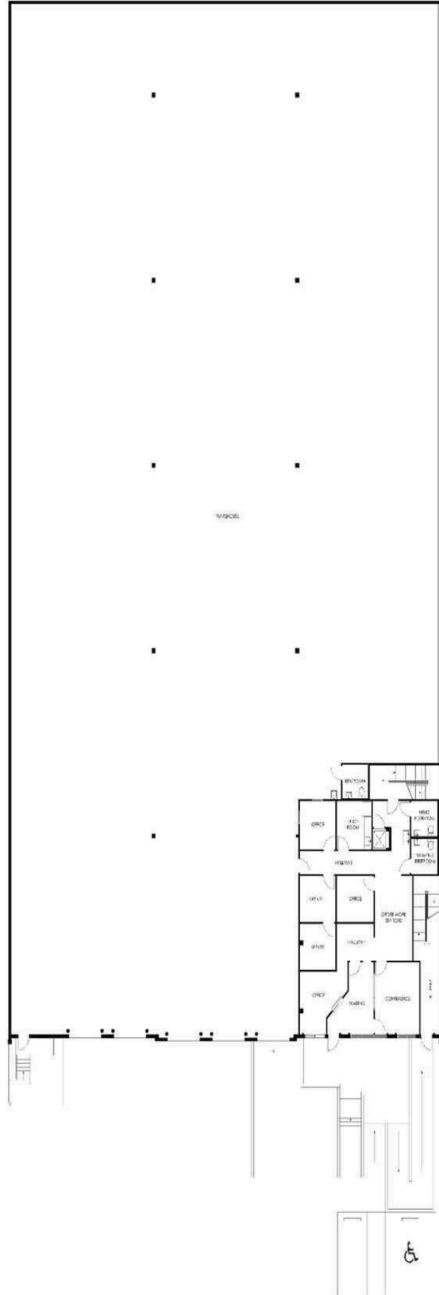
7500 NW 25th Street, Suite 237, Doral, Florida 33122

P: +1 (305) 804-9154 | F: +1 (866) 708-2763 | E: info@agorare.com

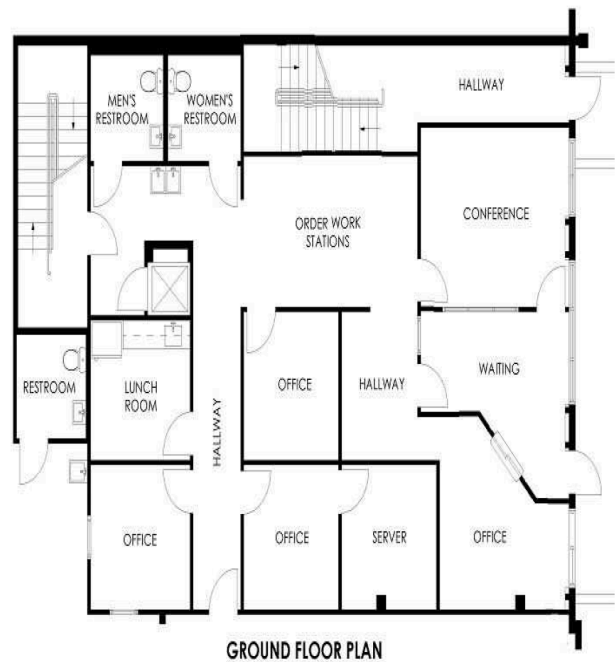
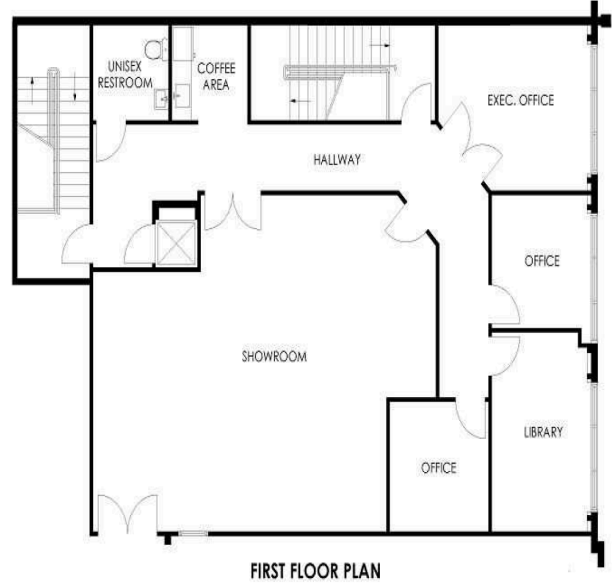
No warranty or representation, expressed or implied, is made as to the accuracy of the information contained herein, and same is submitted subject to errors and omissions.

# PROPERTY FLOOR PLAN

## Warehouse



## Office



### Agora Real Estate Group

7500 NW 25th Street, Suite 237, Doral, Florida 33122

P: +1 (305) 804-9154 | F: +1 (866) 708-2763 | E: info@agorare.com

No warranty or representation, expressed or implied, is made as to the accuracy of the information contained herein, and same is submitted subject to errors and omissions.

# Property Photos



## Agora Real Estate Group

7500 NW 25th Street, Suite 237, Doral, Florida 33122

P: +1 (305) 804-9154 | F: +1 (866) 708-2763 | E: info@agorare.com

**No warranty or representation, expressed or implied, is made as to the accuracy of the information contained herein, and same is submitted subject to errors and omissions.**