



INDUSTRIAL SPACE FOR SALE OR LEASE



PROPERTY FEATURES

- **28,544 SF Total SF Available**
- **4,000 SF Office (2 Floors)**
- **4 Docks + 1 Ramp**
- **24´ Clear Ceiling Height**
- **3 Phase Power / 480 Volts**
- **LED lightning & Fire-Sprinklers**
- **Racks already in place**
- **Okeechobee Road Signage**
- **Plenty of Parking**

For more information contact:

Elias G. Patsalos, CCIM
Phone: 305-804-9154
Email: elias@agorare.com

Michal Bibr
Phone: 305-458-4140
Email: michal@agorare.com

SALE / LEASE
10MIL (350PSF) / 18.95 GROSS

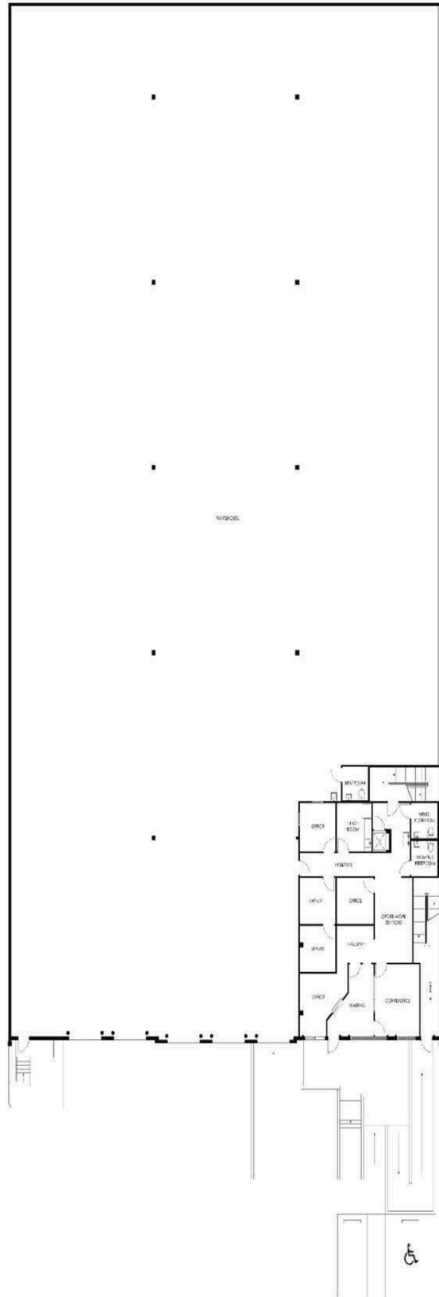


**Scan the QR
code for more
information**

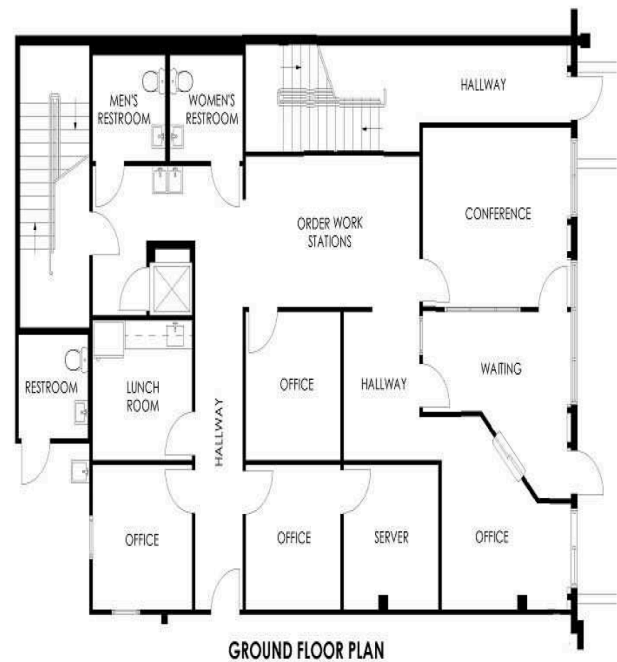
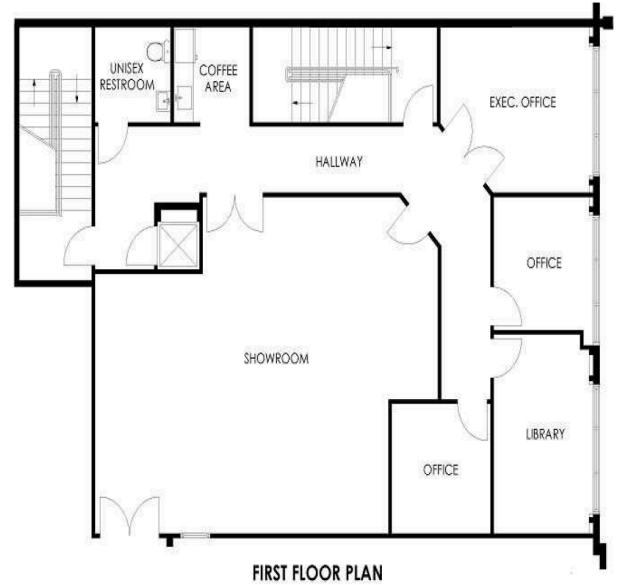
Agora Real Estate Group
 7500 NW 25th Street, Suite 237, Doral, Florida 33122
 P: +1 (305) 804-9154 | F: +1 (866) 708-2763 | E: info@agorare.com
**No warranty or representation, expressed or implied, is made as to the accuracy of the
information contained herein, and same is submitted subject to errors and omissions.**

PROPERTY FLOOR PLAN

Warehouse



Office



Agora Real Estate Group

7500 NW 25th Street, Suite 237, Doral, Florida 33122

P: +1 (305) 804-9154 | F: +1 (866) 708-2763 | E: info@agorare.com

No warranty or representation, expressed or implied, is made as to the accuracy of the information contained herein, and same is submitted subject to errors and omissions.

Property Photos



Agora Real Estate Group

7500 NW 25th Street, Suite 237, Doral, Florida 33122

P: +1 (305) 804-9154 | F: +1 (866) 708-2763 | E: info@agorare.com

No warranty or representation, expressed or implied, is made as to the accuracy of the information contained herein, and same is submitted subject to errors and omissions.