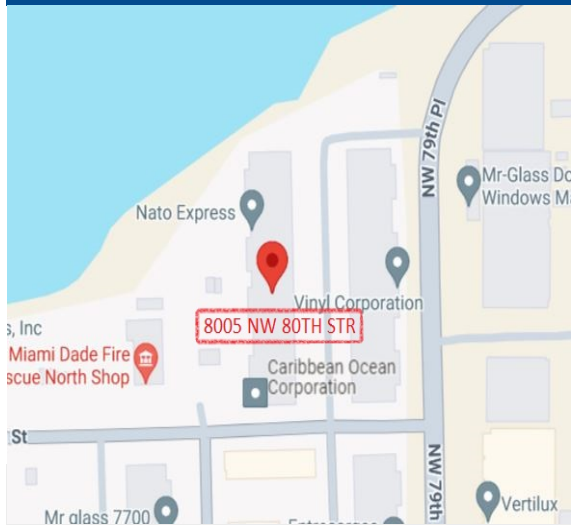




## INDUSTRIAL SPACE FOR SUBLEASE +/- 25,576 - 53,472 SF



### PROPERTY FEATURES

#### Option A

- +/- 25,576 SF Total SF Available
- +/- 1,630 SF Office Area
- 14 Docks + 1 Concrete Ramp
- Available 10/01/24
- Sublease Expiration 09/30/28

#### Option B

- +/- 53,472 SF Total SF Available
- +/- 2,264 SF Office Area
- 29 Docks + 1 Concrete Ramp
- Available 10/01/24
- Sublease Expiration 09/30/28

#### Building Specs

- 24' Clear Ceiling Height
- Concrete Twin T Roof
- 3-Phase Power

### SUBLEASE RATE

**18.00 IG PSF**

**For More Information Contact:**

**Elias G. Patsalos, CCIM**

**Phone: 305-804-9154**

**Email: [elias@agorare.com](mailto:elias@agorare.com)**

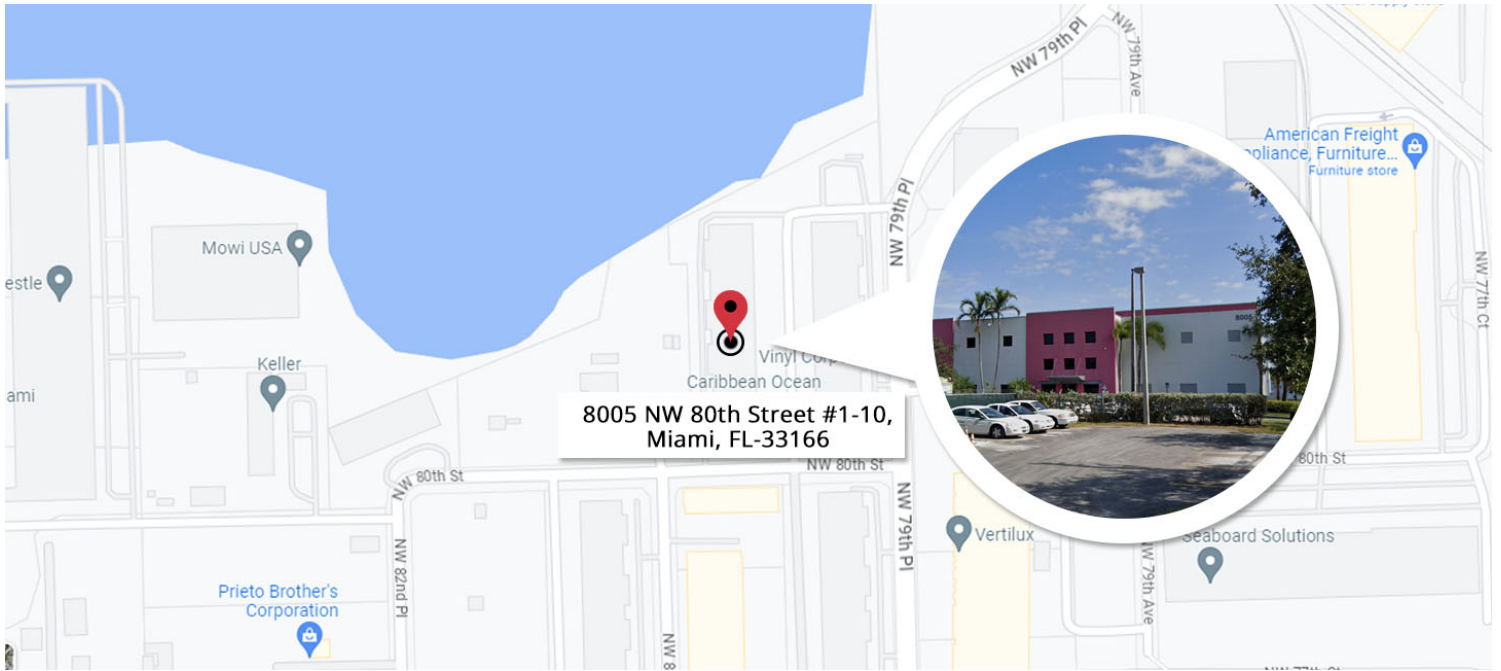
**Agora Real Estate Group**

7500 NW 25th Street, Suite 237, Doral, FL-33122

P: +1 (305) 804-9154 | F: +1 (866) 708-2763 | E: [info@agorare.com](mailto:info@agorare.com)

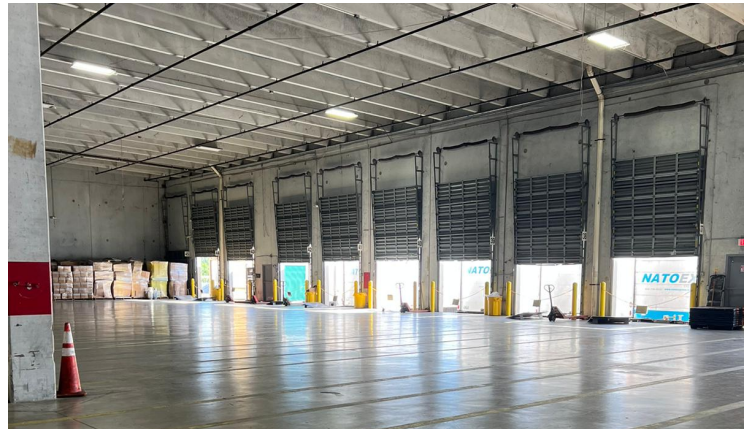
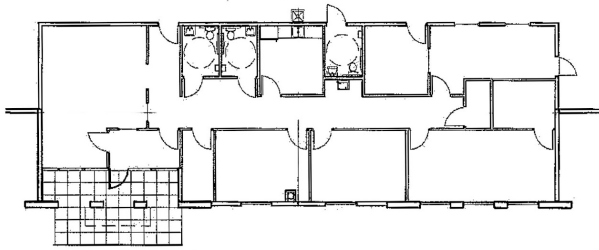
No warranty or representation, expressed or implied, is made as to the accuracy of the information contained herein, and same is submitted subject to errors and omissions.





## PROPERTY PICTURES

OFFICE AREA 2,234 SF



**Agora Real Estate Group**

7500 NW 25th Street, Suite 237, Doral, FL-33122

P: +1 (305) 804-9154 | F: +1 (866) 708-2763 | E: [info@agorare.com](mailto:info@agorare.com)

No warranty or representation, expressed or implied, is made as to the accuracy of the information contained herein, and same is submitted subject to errors and omissions.