



INDUSTRIAL SPACE FOR SUBLEASE +/- 5,400 SF

PROPERTY FEATURES

- +/- 5,400 SF Total SF Available
- +/- 800 SF Office Area
- +/- 620 SF Built In Coolers
- +/- 3,980 SF Dry Warehouse
- 2 Recessed Docks
- 21' Ceiling Clear height
- Parking ratio: 1/1,000 SF
- LED lighting in warehouse & office
- Sublease until June 1, 2025

SUBLEASE RATE

\$12,200/m Gross

For More Information Contact:

Elias G. Patsalos, CCIM

Phone: 305-804-9154

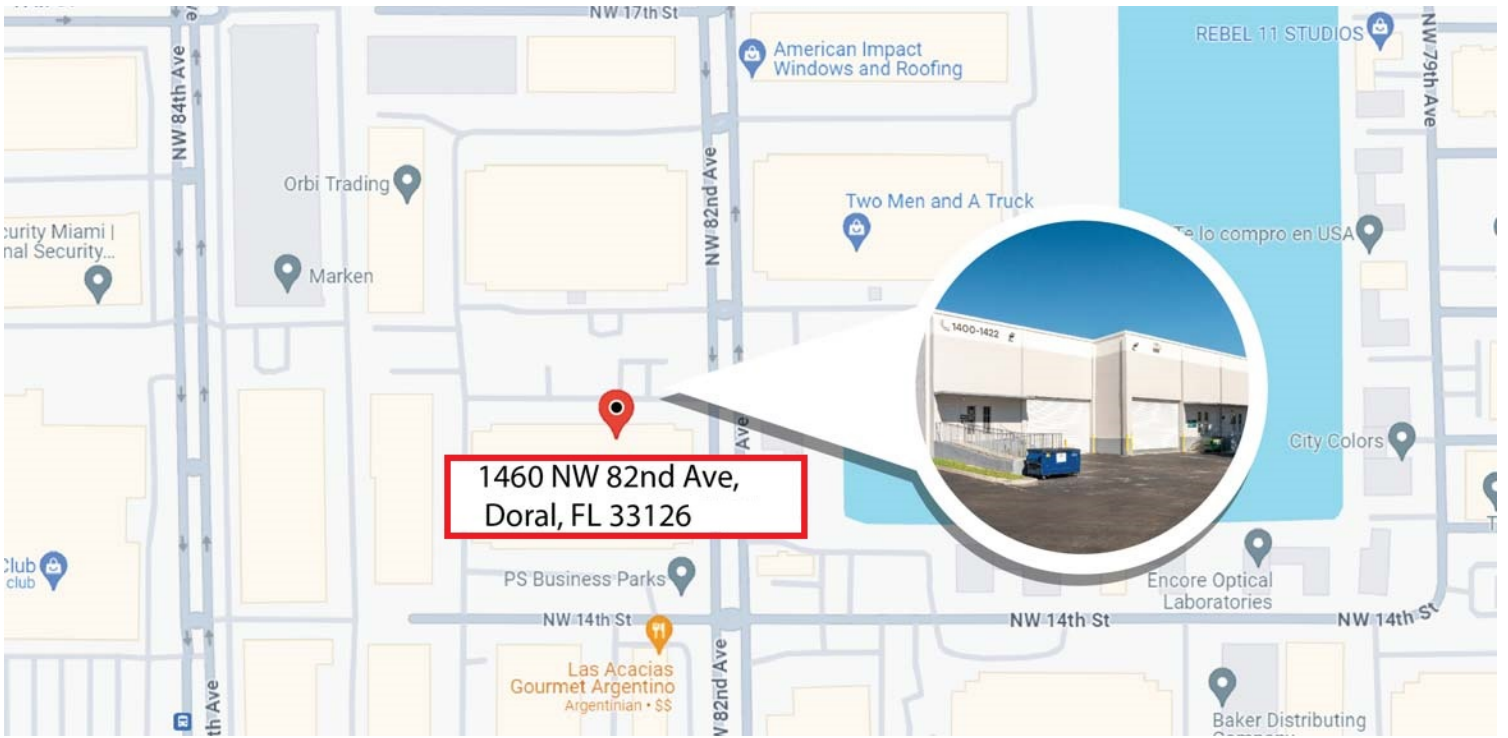
Email: elias@agorare.com

Agora Real Estate Group

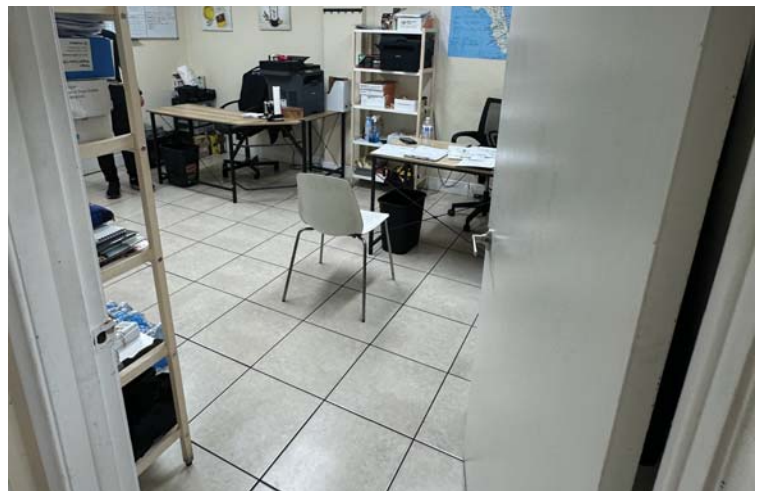
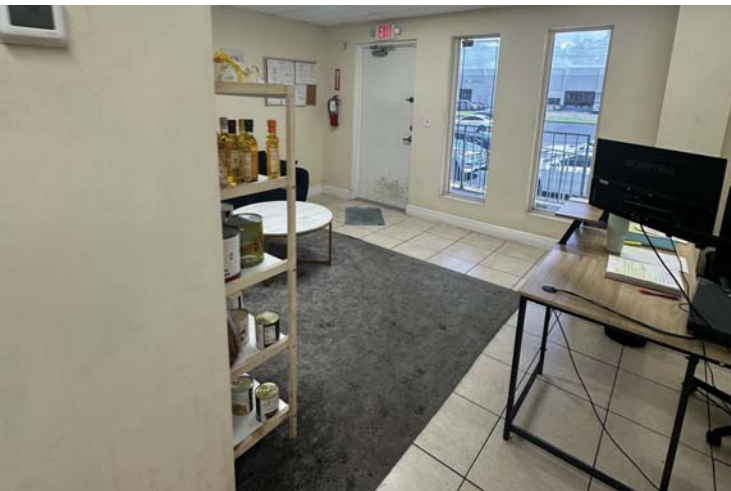
7500 NW 25th Street, Suite 237, Doral, FL-33122

P: +1 (305) 804-9154 | F: +1 (866) 708-2763 | E: info@agorare.com

No warranty or representation, expressed or implied, is made as to the accuracy of the information contained herein, and same is submitted subject to errors and omissions.



PROPERTY PICTURES



Agora Real Estate Group

7500 NW 25th Street, Suite 237, Doral, FL-33122

P: +1 (305) 804-9154 | F: +1 (866) 708-2763 | E: info@agorare.com

No warranty or representation, expressed or implied, is made as to the accuracy of the information contained herein, and same is submitted subject to errors and omissions.