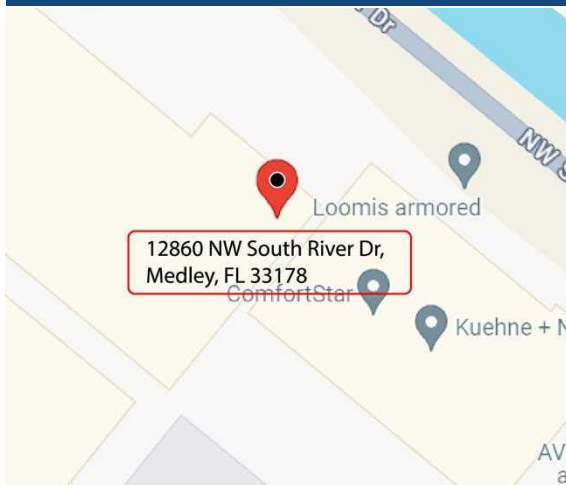




INDUSTRIAL SPACE FOR LEASE OR SALE +/- 28,544 SF

PROPERTY FEATURES

- 28,544 SF Total SF Available
- 4,000 SF - Office (2 Floors)
- 4 Docks + 1 Ramp
- 24' Clear Ceiling height
- 3 Phase Power / 480 Volts
- LED lightning & Fire-Spinkled Warehouse
- Racks already in place
- Okeechobee Road Signage
- Also available for sale. Inquire for price.



For More Information Contact:

Elias G. Patsalos, CCIM

Phone: 305-804-9154

Email: elias@agorare.com

Michal Bibr

Phone: 305-458-4140

Email: michal@agorare.com

LEASE RATE

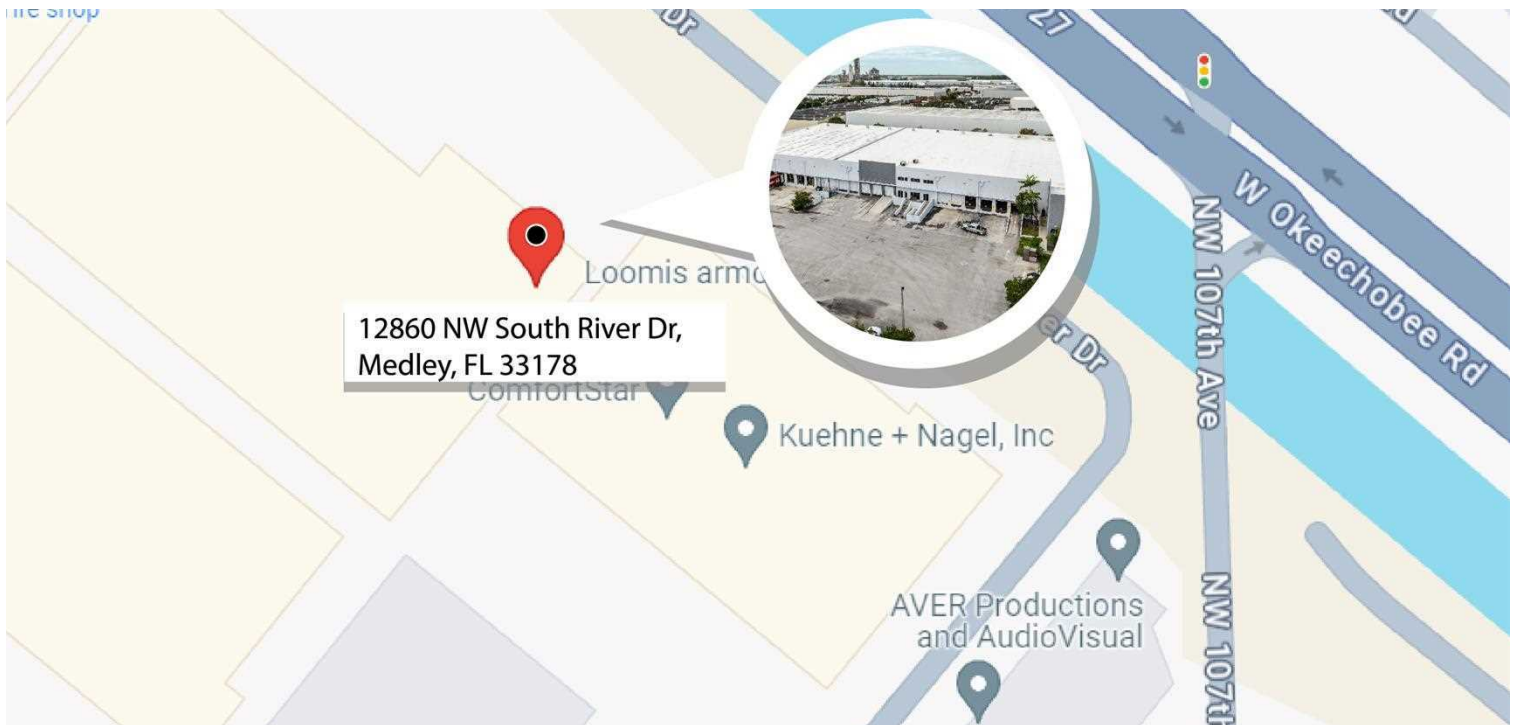
19.75 PSF Gross

Agora Real Estate Group

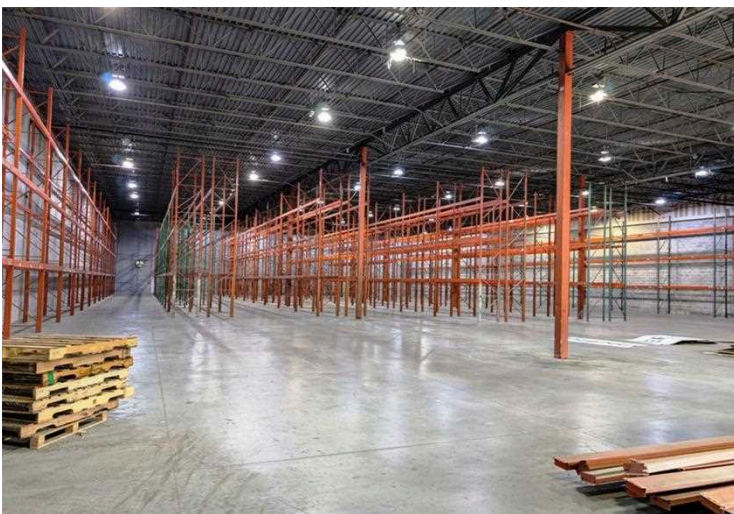
7500 NW 25th Street, Suite 237, Doral, FL-33122

P: +1 (305) 804-9154 | F: +1 (866) 708-2763 | E: info@agorare.com

No warranty or representation, expressed or implied, is made as to the accuracy of the information contained herein, and same is submitted subject to errors and omissions.



PROPERTY PICTURES



Agora Real Estate Group

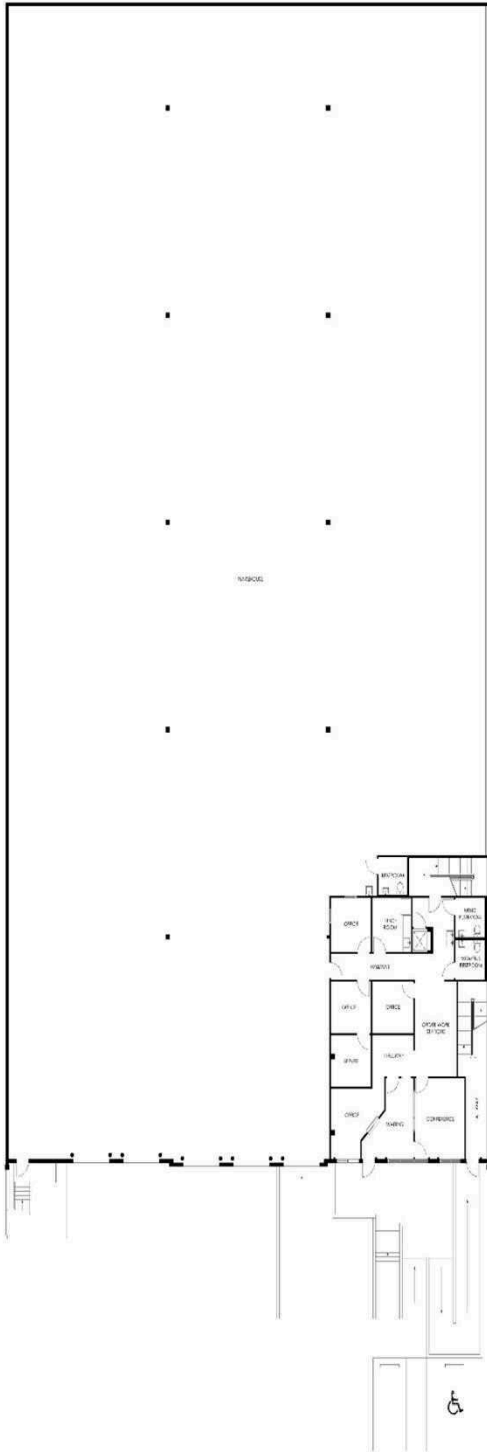
7500 NW 25th Street, Suite 237, Doral, FL-33122

P: +1 (305) 804-9154 | F: +1 (866) 708-2763 | E: info@agorare.com

No warranty or representation, expressed or implied, is made as to the accuracy of the information contained herein, and same is submitted subject to errors and omissions.

PROPERTY FLOOR PLAN

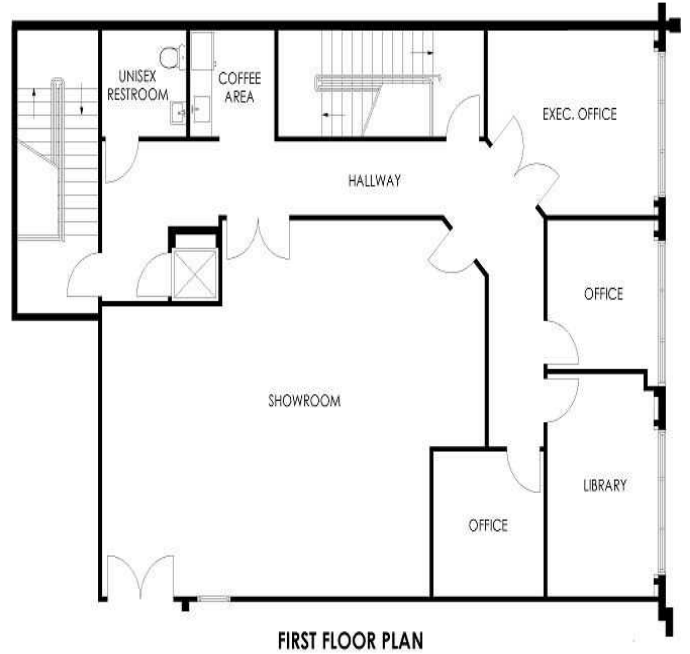
Warehouse



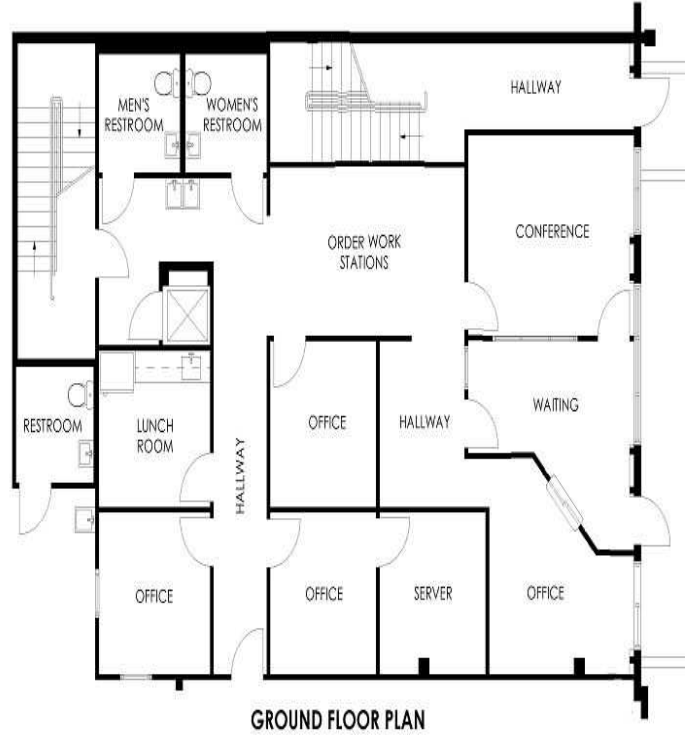
SECOND FLOOR OFFICE



Office



FIRST FLOOR PLAN



GROUND FLOOR PLAN

Agora Real Estate Group

7500 NW 25th Street, Suite 237, Doral, FL-33122

P: +1 (305) 804-9154 | F: +1 (866) 708-2763 | E: info@agorare.com

No warranty or representation, expressed or implied, is made as to the accuracy of the information contained herein, and same is submitted subject to errors and omissions.