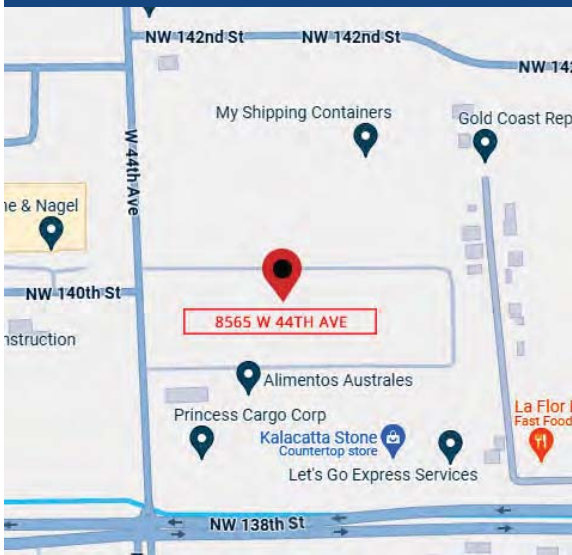




INDUSTRIAL SPACE FOR SUBLEASE +/- 11,112 SF



PROPERTY FEATURES

- +/- 11,112 SF Total SF Available
- +/- 1,982 SF Office Area
- +/- 1,982 SF Concrete Mezzanine
- 3 Docks
- 30" Ceiling height
- 6 Parking spaces
- ESFR Sprinkler System
- 2022 Construction
- 4 1/2 Year Sublease Term

For More Information Contact:

Elias G. Patsalos, CCIM

Phone: 305-804-9154

Email: elias@agorare.com

SUBLEASE RATE

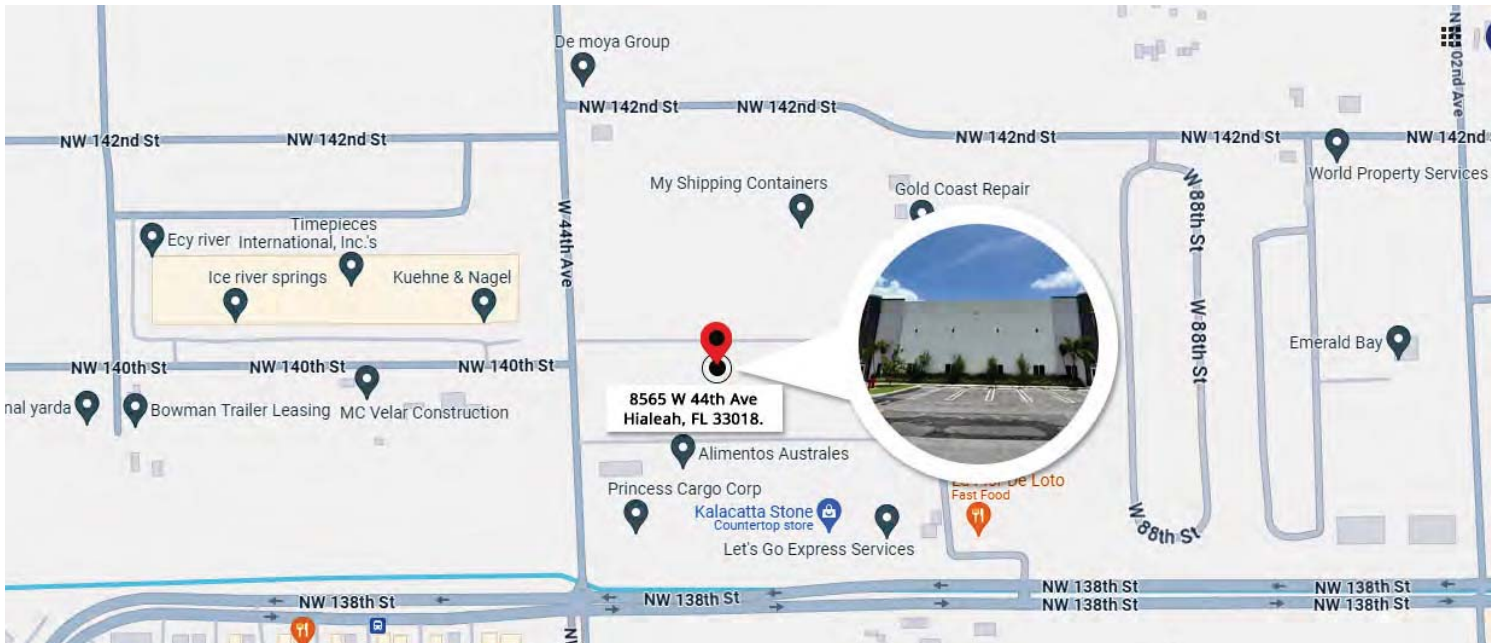
\$19.50 PSF Gross

Agora Real Estate Group

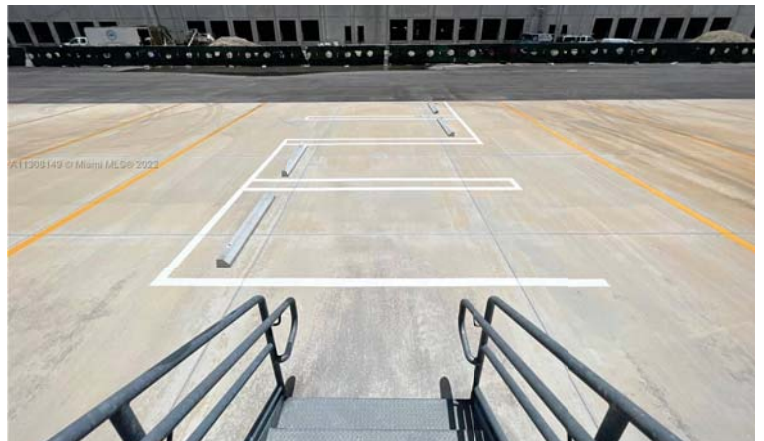
7500 NW 25th Street, Suite 237, Doral, FL-33122

P: +1 (305) 804-9154 | F: +1 (866) 708-2763 | E: info@agorare.com

No warranty or representation, expressed or implied, is made as to the accuracy of the information contained herein, and same is submitted subject to errors and omissions.



PROPERTY PICTURES



Agora Real Estate Group

7500 NW 25th Street, Suite 237, Doral, FL-33122

P: +1 (305) 804-9154 | F: +1 (866) 708-2763 | E: info@agorare.com

No warranty or representation, expressed or implied, is made as to the accuracy of the information contained herein, and same is submitted subject to errors and omissions.