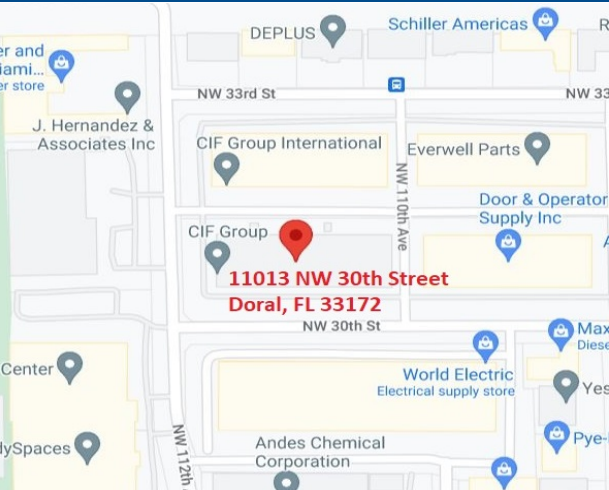




INDUSTRIAL WAREHOUSE FOR SUBLEASE - 25,600 SF



PROPERTY FEATURES

- Total area 25,600 sf
- Office area +/- 4,300 sf
- Ten (10) dock height loading doors
- One (1) concrete ramp door
- 24' clear ceiling height
- Fire suppression system
- High-bay lighting system
- Abundant parking
- End cap unit
- 5 private office, conference room, bullpen area for workstations
- Racks and cooler available for purchase
- Sublease expires June 30, 2024

For more information
contact:

Elias G. Patsalos, CCIM
Phone: 305-804-9154
Email: elias@agorare.com

Michal Bibr
Phone: 305-458-4140
Email: michal@agorare.com

LEASE RATE

\$13.50 PSF IG

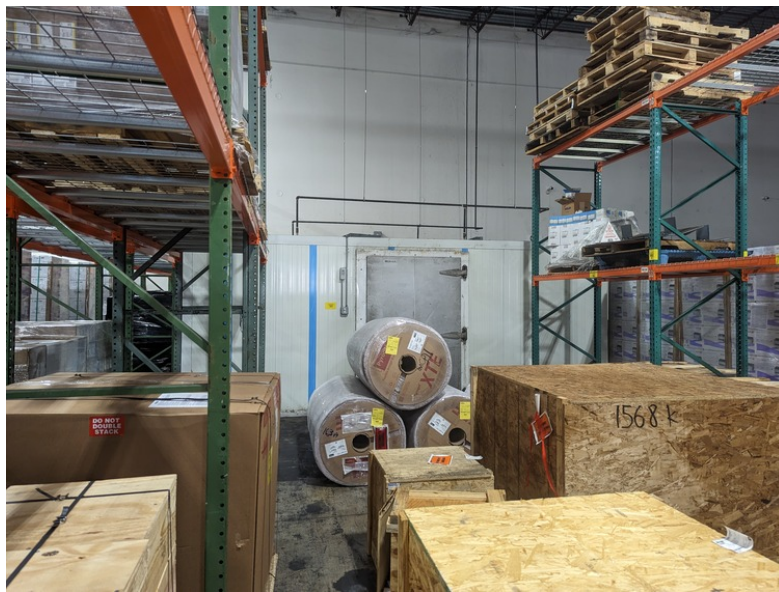
Agora Real Estate Group

7500 NW 25th Street, Suite 237, Doral, FL-33122

P: +1 (305) 804-9154 | F: +1 (866) 708-2763 | E: info@agorare.com

No warranty or representation, expressed or implied, is made as to the accuracy of the information contained herein, and same is submitted subject to errors and omissions.

PROPERTY PHOTOS



Agora Real Estate Group

7500 NW 25th Street, Suite 237, Doral, FL-33122

P: +1 (305) 804-9154 | F: +1 (866) 708-2763 | E: info@agorare.com

No warranty or representation, expressed or implied, is made as to the accuracy of the information contained herein, and same is submitted subject to errors and omissions.